

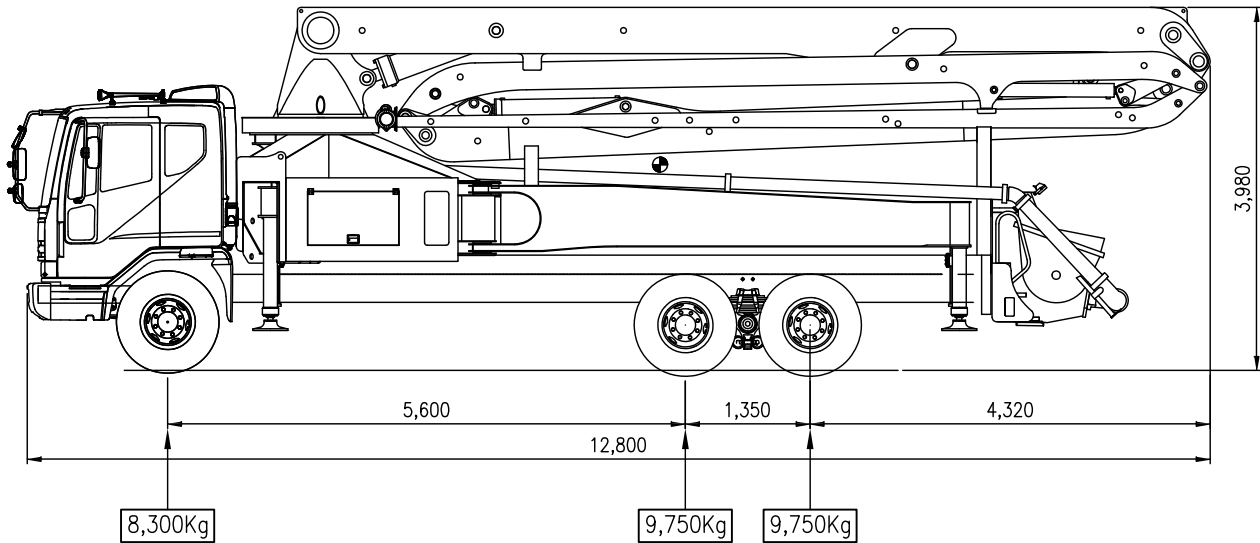
# STEEELUS

EQUIPMENT

## SPT41R4

### TECHNICAL DATA

#### TRUCK MOUNTED CONCRETE PUMP



TOTAL: 27,800Kg

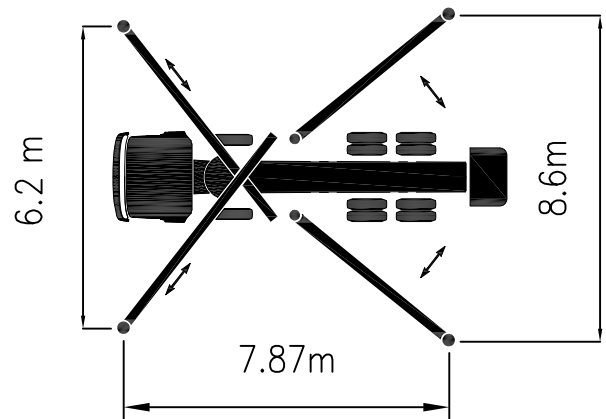
#### BOOM SPECIFICATIONS

Vertical Reach	39.3m
Horizontal Reach	35.5m
Reach from front of Truck	31.2m
Unfolding Height	8.9m
Depth Reach	26.8m
Rotation	360°
End Hose Length	4m
Delivery Line	125mm

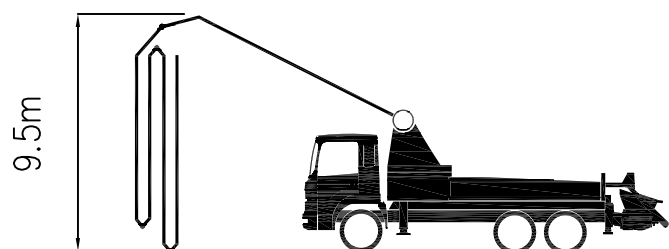
#### PUMP SPECIFICATIONS

Max. Output	162m <sup>3</sup> /h
Concrete Cylinder	ø230x2100
Stroke per Minute	30
Concrete Pressure	70bar
Hopper Capacity	0.6m <sup>3</sup>
S-Tube	S2018
Hydraulic Pump	REXROTH
Radio Remote	AUTEC, HBC
Max Aggregate Size	40mm

#### Outrigger Diagram



#### Unfolding Height



# STEELUS

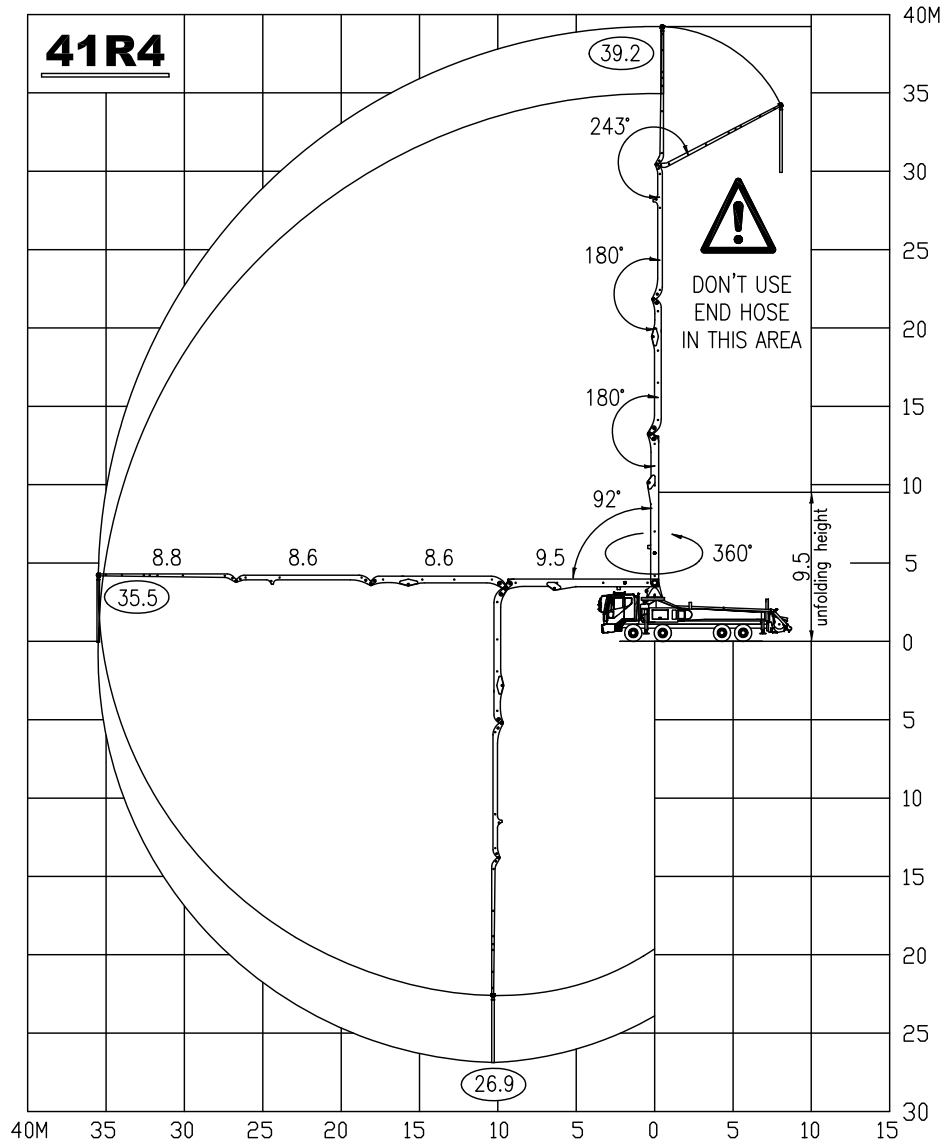
EQUIPMENT

**SPT41R4**

**TECHNICAL DATA**

**TRUCK MOUNTED  
CONCRETEPUMP**

**WORKING DIAGRAM**



**Supply Scope(STANDARD)**

- Twin Wall Pipes & Elbows
- Hydraulic changing System
- Hard chromed Concrete Cylinder
- Tungsten Carbide Wear ring & Plate
- Aluminum Platform
- Aluminum Hopper Cover
- Auto Grease System for Hopper
- Water tank (600L)
- Water Pump (30bar)
- Auxiliary Fuel Tank on side Rear Outrigger
- Water Hose with Nozzle(15m)
- Working Light on Hopper & Column
- Convenient Electrical System
- Easy Clening Hopper (600L)

**OPTIONS**

- OSS System(One Side Safety System)
- Safety Device for Hopper
- Auto grease System for Boom & Turning Base
- Customized Color
- Electric Vibrator
- Working Light on Boom

\* STEELUS may change the above contents without Notice and has no obligation to notify of the changed content.