

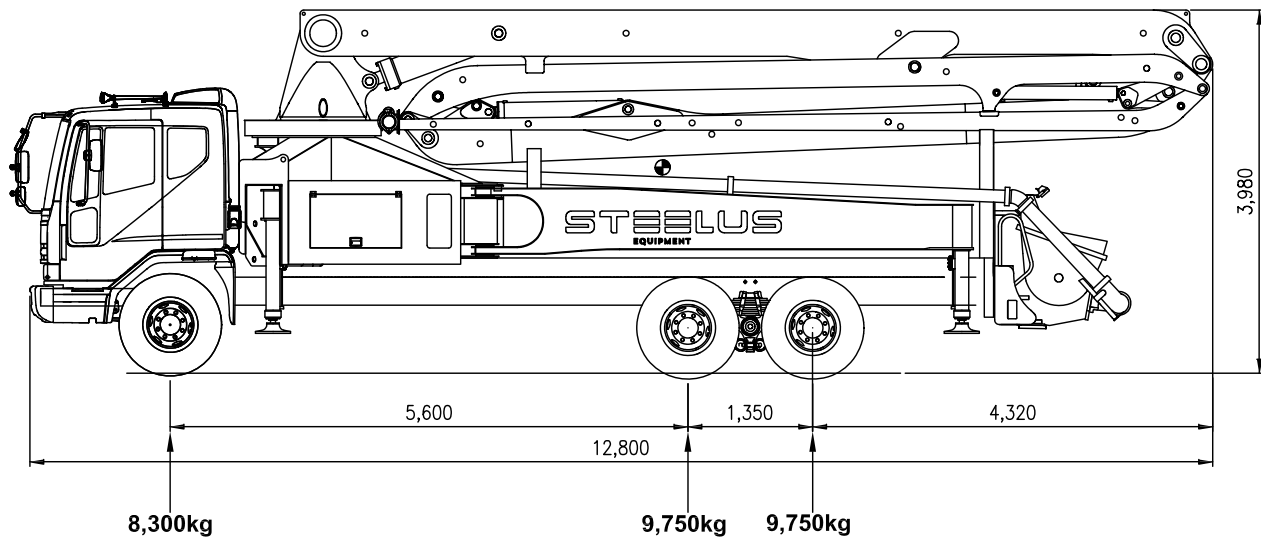
STEELUS

EQUIPMENT

SPT41R4

TECHNICAL DATA

TRUCK-MOUNTED CONCRETE PUMP

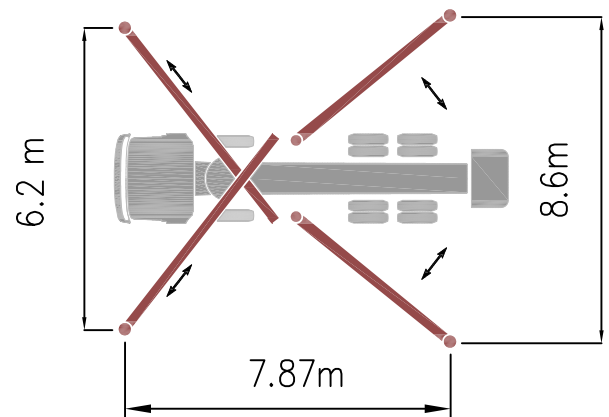


TOTAL WEIGHT : 27,800kg

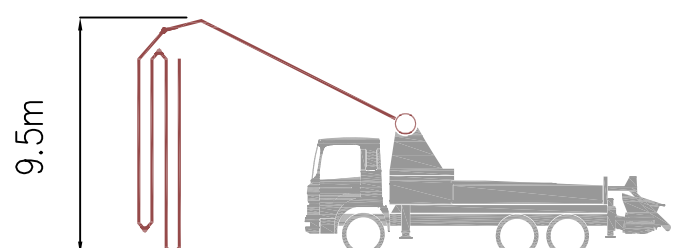
TECHNICAL SPECIFICATIONS

BOOM SPECIFICATIONS	Number of Booms	4	un
	Folding Type	R	type
	Vertical Reach	39.3	m
	Horizontal Reach	35.5	m
	Reach Depth	26.8	m
	Unfolding Height	9.5	m
	Delivery Line	125	mm
	End Hose Length	4	m
	Outrigger Spread - Front	6.2	m
PUMP SPECIFICATIONS	Outrigger Spread - Rear	8.6	m
	Maximum Output	Low-pressure 160 m ³ /h High-pressure 100 m ³ /h	
	Concrete Pressure	Low-pressure 70 bar High-pressure 112 bar	
	Stroke Per Min.	30	str
	Delivery Cylinder	230	Ø
	Stroke Length	2100	mm
	S-Valve	Ø200 x Ø180	mm
	Hydraulic System Pressure	350	bar
	Hydraulic System	Open	type
	Hydraulic Max. Pressure	320	bar
	Hydraulic Pump	Rexroth	
	Hopper Capacity	600	liter
	Oil Tank Capacity	500	liter
	Max. Aggregate Size	40	mm
	Water Pump Pressure	20	bar
	Water Tank Capacity	500	liter

Outrigger Diagram



Unfolding Hight



STEELUS

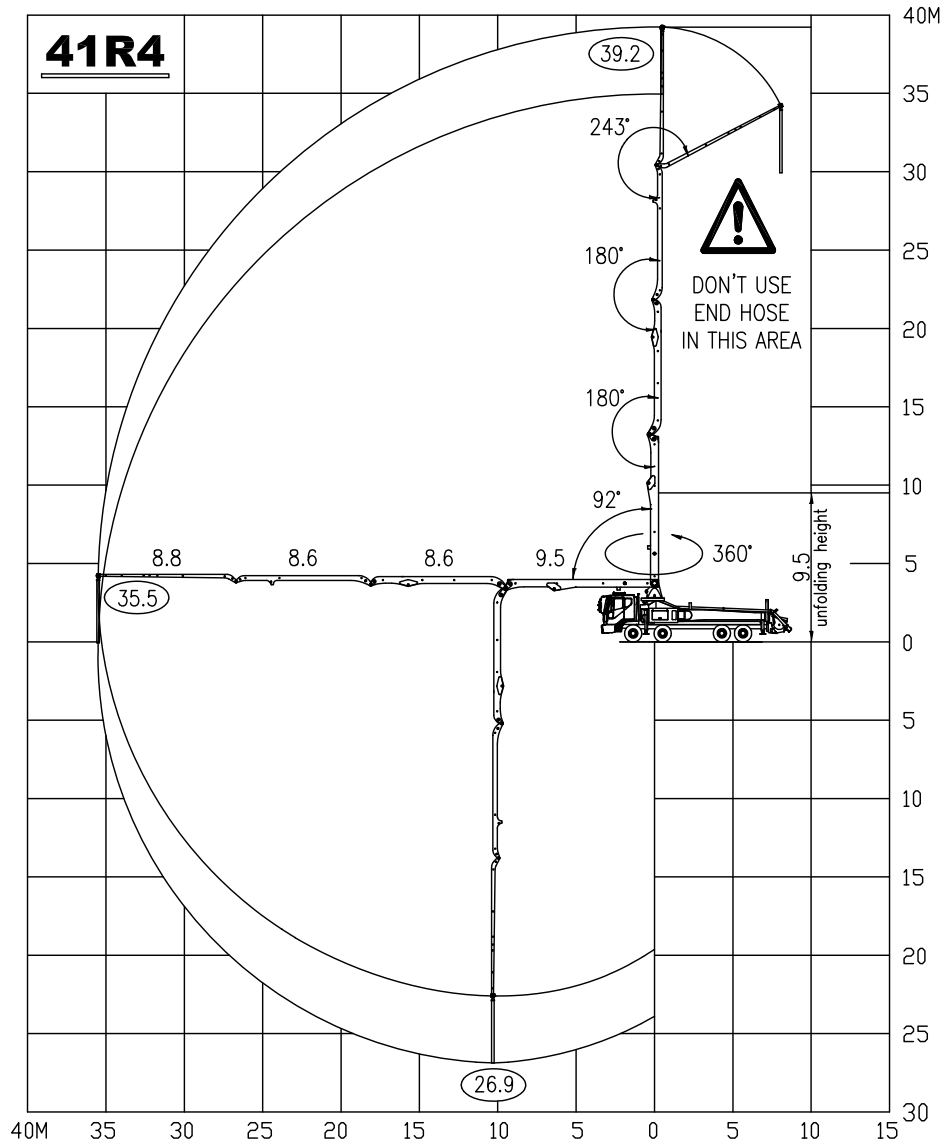
EQUIPMENT

TECHNICAL DATA

SPT41R4

TRUCK-MOUNTED
CONCRETE PUMP

WORKING DIAGRAM



Supply Scope (STANDART)

- Twin Wall pipes & Elbows
- Hydraulic changing System
- Hard chromed Concrete Cylinder
- Tungsten Carbide Wear ring & Plate
- Aluminum Platform
- Aluminum Hopper Cover
- Auto Grease System for Hopper
- Water tank (600L)
- Water Pump (30bar)
- Auxiliary Fuel Tank on side Rear Outrigger
- Water Hose with Nozzle (15m)
- Working Light on Hopper & Column
- Convenient Electrical System
- Easy cleaning Hopper (600L)

OPTIONS

- OSS System (One Side Safety System)
- Safety device for Hopper
- Auto grease System for Boom & Turning Base
- Customized Color
- Electric Vibrator
- Working Light on Boom

