

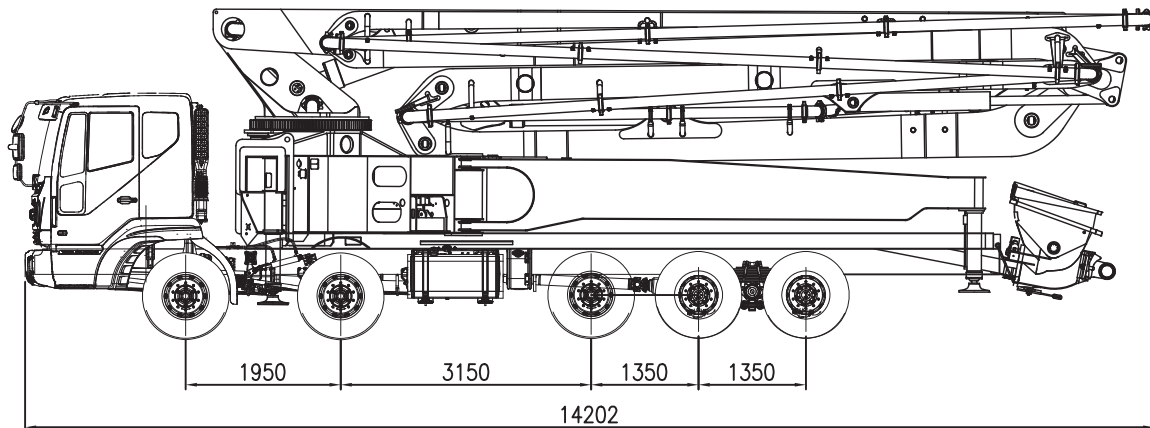
STEEELUS

EQUIPMENT

SPT53R5

TECHNICAL DATA

TRUCK MOUNTED CONCRETE PUMP



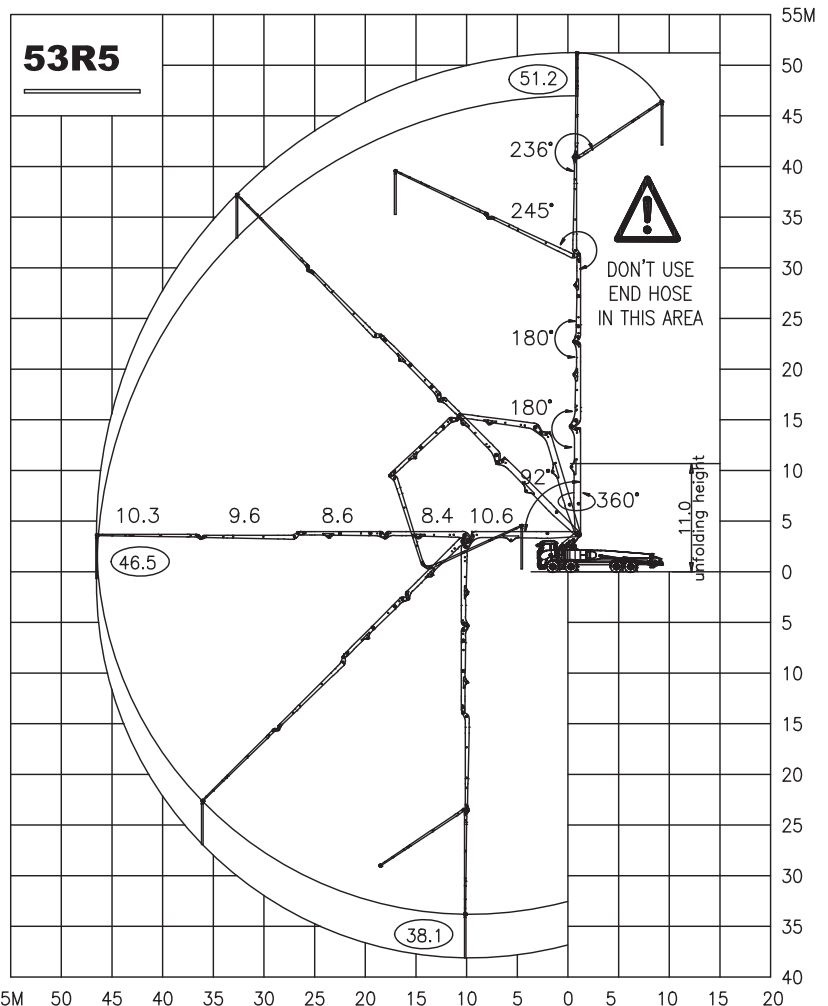
WORKING DIAGRAM

BOOM SPECIFICATIONS

Vertical Reach	51.2m
Horizontal Reach	47.4m
Reach from front of Truck	43.5m
Unfolding Height	10.1m
Depth Reach	40.9m
Rotation	360°
End Hose Length	4m
Delivery Line	125mm

PUMP SPECIFICATIONS

Max. Output	162m ³ /h
Concrete Cylinder	Ø230x2100
Stroke per Minute	30
Concrete Pressure	70bar
Hopper Capacity	0.6m ³
S-Tube	S2018
Hydraulic Pump	REXROTH
Radio Remote	HBC, AUTECH
Max Aggregate Size	40mm



NOTE: STEELUS RESERVES THE RIGHT TO MAKE CHANGES TO THESE SPECIFICATION