

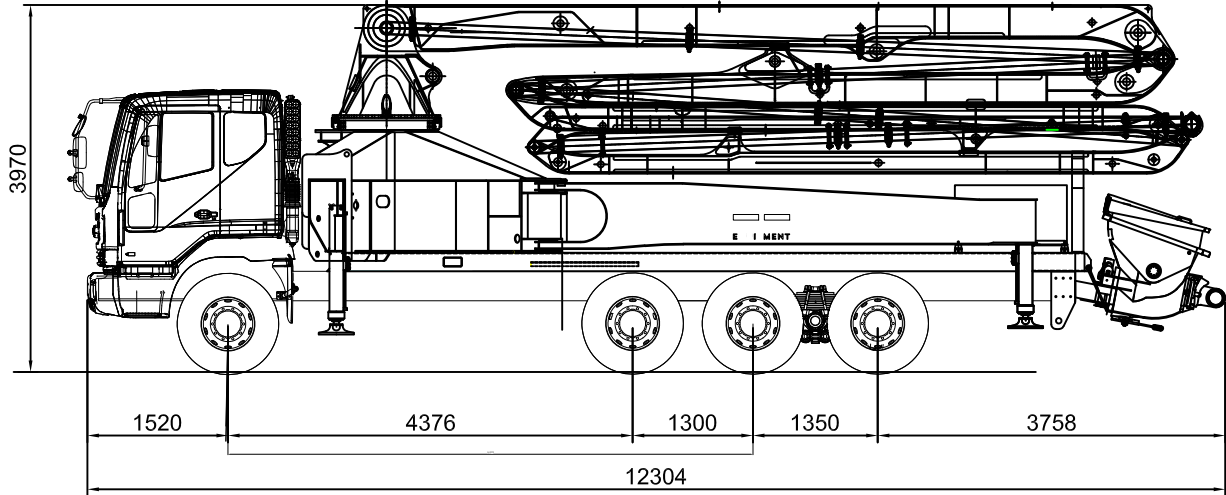
# STEEELUS

EQUIPMENT

## SPT41ZR5

### TECHNICAL DATA

#### TRUCK-MOUNTED CONCRETE PUMP

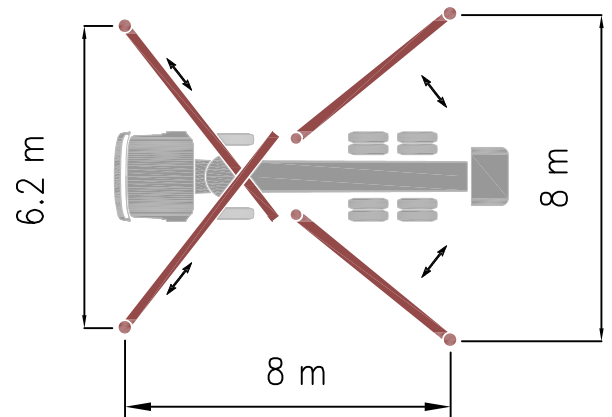


TOTAL : 30,430kg

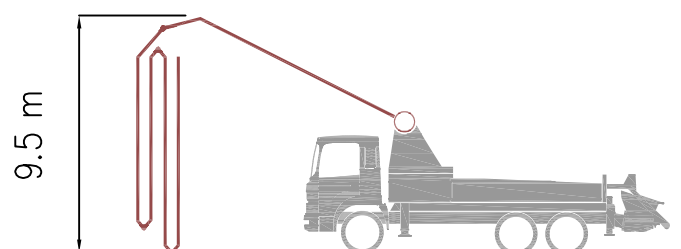
### TECHNICAL SPECIFICATIONS

BOOM SPECIFICATIONS		PUMP SPECIFICATIONS	
Number of Booms	5	un	
Folding Type	Z-R	type	
Vertical Reach	40.6	m	
Horizontal Reach	36.7	m	
Reach Depth	28.2	m	
Unfolding Height	9.5	m	
Delivery Line	125	mm	
End Hose Length	3.5	m	
Outrigger Spread - Front	6.2	m	
Outrigger Spread - Rear	8	m	
Maximum Output	Low-pressure	160	m <sup>3</sup> /h
	High-pressure	100	m <sup>3</sup> /h
Concrete Pressure	Low-pressure	70	bar
	High-pressure	112	bar
Stroke Per Min.	30	str	
Delivery Cylinder	230	Ø	
Stroke Length	2100	mm	
S-Valve	Ø200 x Ø180	mm	
Hydraulic System Pressure	350	bar	
Hydraulic System	Open	type	
Hydraulic Max. Pressure	320	bar	
Hydraulic Pump	Rexroth		
Hopper Capacity	600	liter	
Oil Tank Capacity	500	liter	
Max. Aggregate Size	40	mm	
Water Pump Pressure	20	bar	
Water Tank Capacity	500	liter	

### Outrigger Diagram



### Unfolding Height



# STEELUS

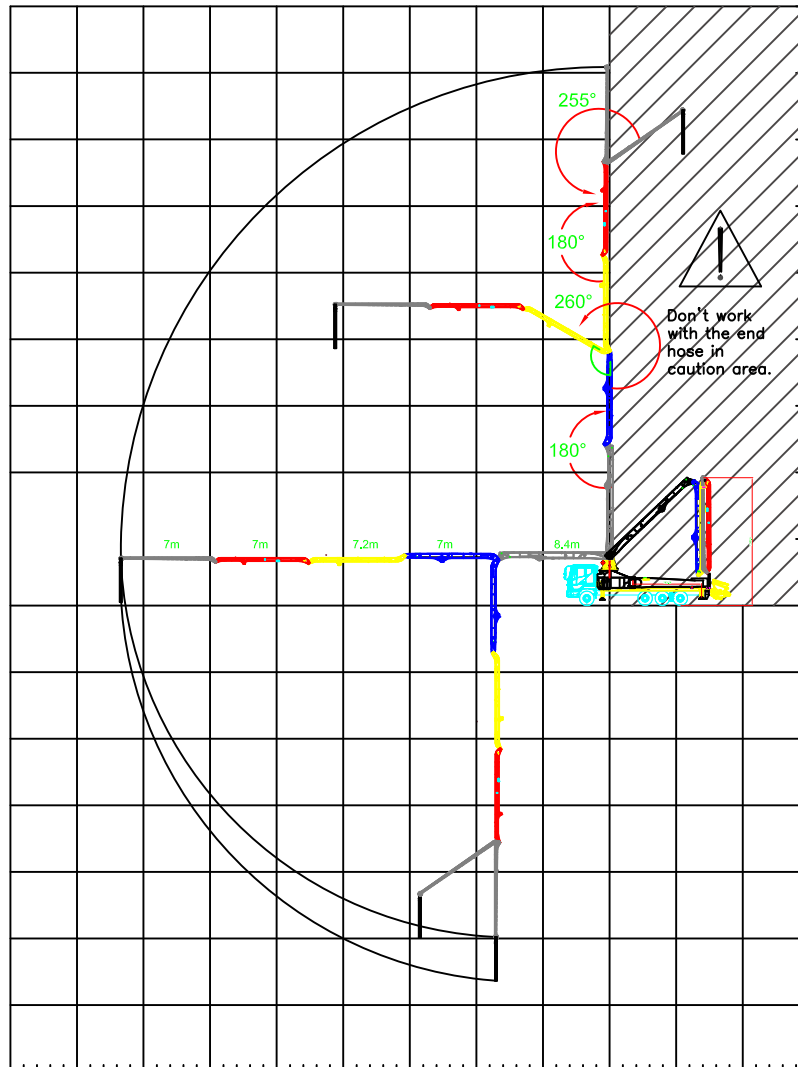
EQUIPMENT

## SPT41ZR5

### TECHNICAL DATA

TRUCK-MOUNTED  
CONCRETE PUMP

### WORKING DIAGRAM



### Supply Scope (STANDARD)

- Twin Wall pipes & Elbows
- Hydraulic changing System
- Hard chromed Concrete Cylinder
- Tungsten Carbide Wear ring & Plate
- Aluminum Platform
- Aluminum Hopper Cover
- Auto Grease System for Hopper
- Water tank (600L)
- Water Pump (30bar)
- Auxiliary Fuel Tank on side Rear Outrigger
- Water Hose with Nozzle (15m)
- Working Light on Hopper & Column
- Convenient Electrical System
- Easy cleaning Hopper (600L)

### OPTIONS

- OSS System (One Side Safety System)
- Safety device for Hopper
- Auto grease System for Boom & Turning Base
- Customized Color
- Electric Vibrator
- Working Light on Boom

