

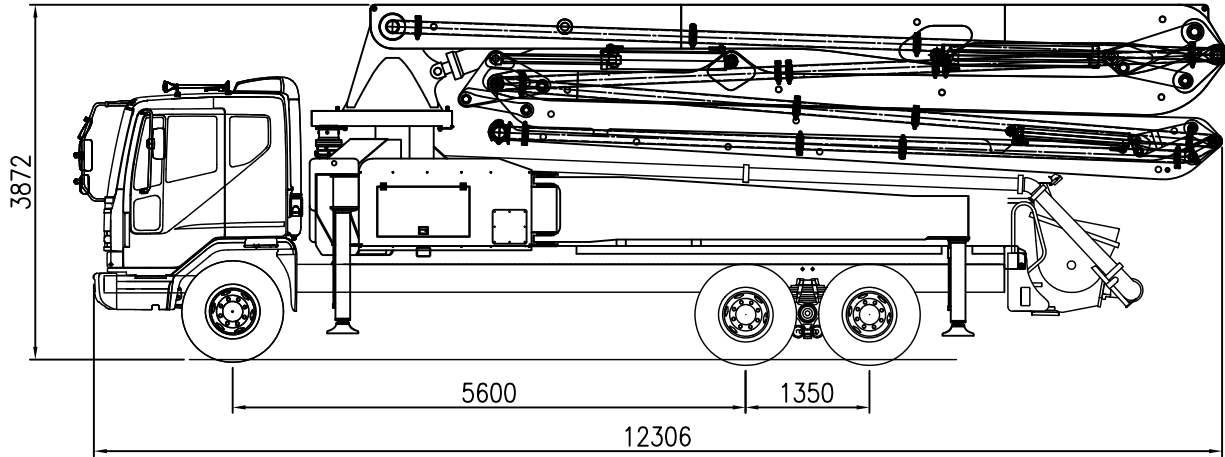
STEELUS

EQUIPMENT

SPT43Z5

TECHNICAL DATA

TRUCK MOUNTED CONCRETE PUMP



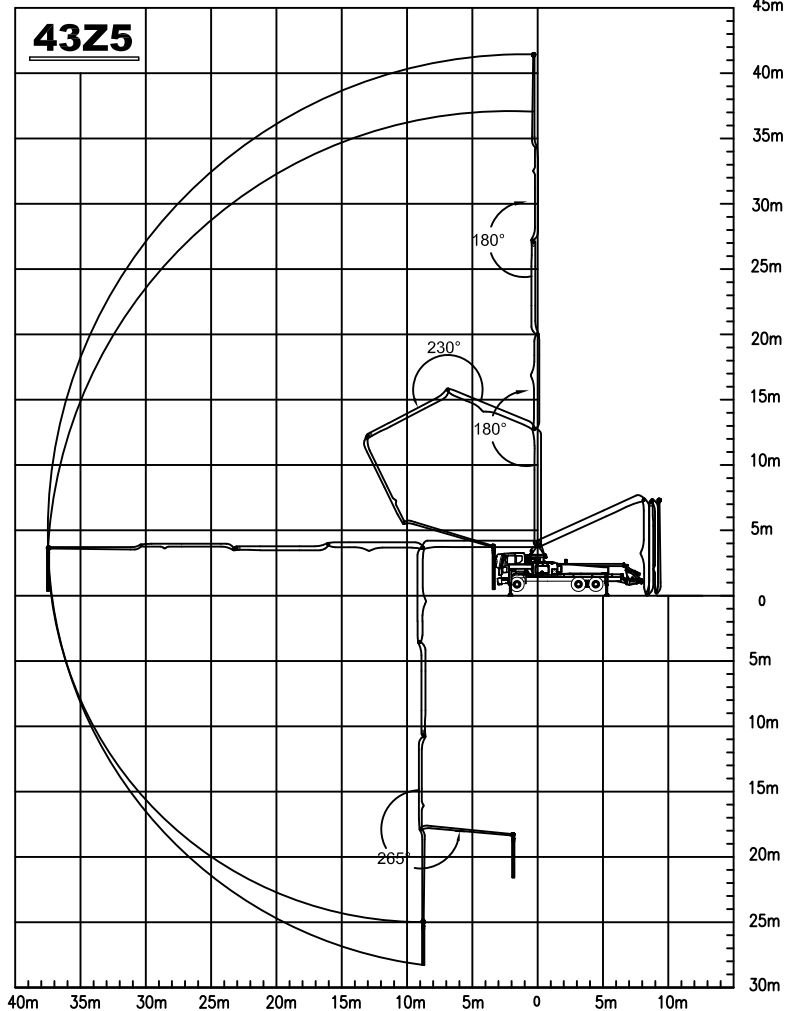
BOOM SPECIFICATIONS

Vertical Reach	41.5m
Horizontal Reach	37.4m
Reach from front of Truck	40.5m
Unfolding Height	7.7m
Depth Reach	28.3m
Rotation	360°
End Hose Length	3.5m
Delivery Line	125mm

PUMP SPECIFICATIONS

Max. Output	162m ³ /h
Concrete Cylinder	∅230x2100
Stroke per Minute	30
Concrete Pressure	70bar
Hopper Capacity	0.6m ³
S-Tube	S2018
Hydraulic Pump	REXROTH
Radio Remote	HBC
Max Aggregate Size	40mm

WORKING DIAGRAM



NOTE: STEELUS RESERVES THE RIGHT TO MAKE CHANGES TO THESE SPECIFICATION