

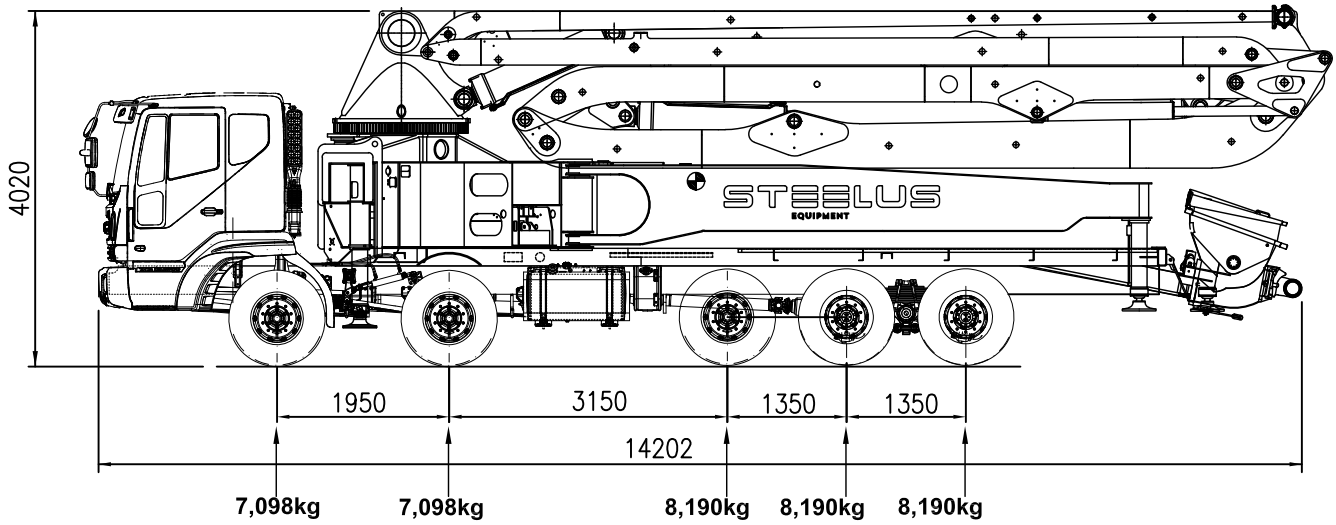
STEELUS

EQUIPMENT

SPT52RZ5

TECHNICAL DATA

TRUCK-MOUNTED CONCRETE PUMP

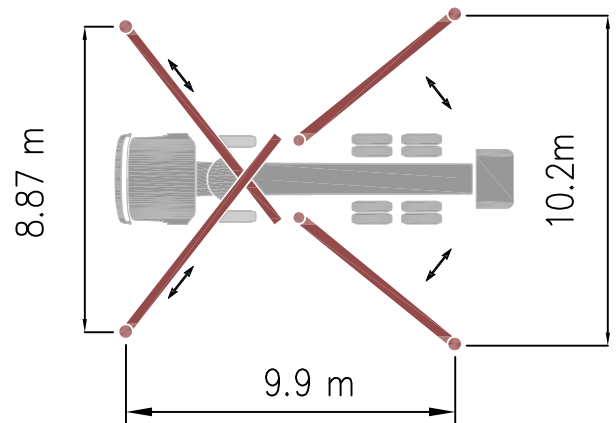


TOTAL WEIGHT : 38,766kg

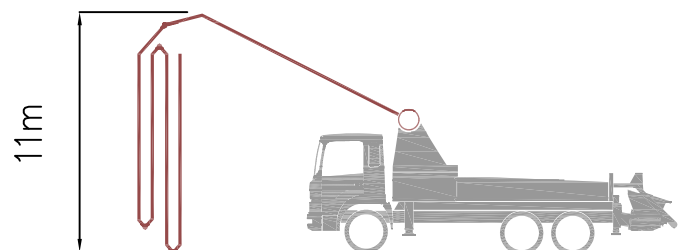
TECHNICAL SPECIFICATIONS

| BOOM SPECIFICATIONS | | | |
|---------------------------|---------------|-------|-------------------|
| Number of Booms | 5 | un | |
| Folding Type | R-Z | type | |
| Vertical Reach | 51.2 | m | |
| Horizontal Reach | 47.4 | m | |
| Reach Depth | 40.9 | m | |
| Unfolding Height | 11 | m | |
| Delivery Line | 125 | mm | |
| End Hose Length | 4 | m | |
| Outrigger Spread - Front | 8.87 | m | |
| Outrigger Spread - Rear | 10.2 | m | |
| PUMP SPECIFICATIONS | | | |
| Maximum Output | Low-pressure | 160 | m ³ /h |
| | High-pressure | 100 | m ³ /h |
| Concrete Pressure | Low-pressure | 70 | bar |
| | High-pressure | 112 | bar |
| Stroke Per Min. | 30 | str | |
| Delivery Cylinder | 230 | Ø | |
| Stroke Length | 2100 | mm | |
| S-Valve | Ø200 x Ø180 | mm | |
| Hydraulic System Pressure | 350 | bar | |
| Hydraulic System | Open | type | |
| Hydraulic Max. Pressure | 320 | bar | |
| Hydraulic Pump | Rexroth | | |
| Hopper Capacity | 600 | liter | |
| Oil Tank Capacity | 500 | liter | |
| Max. Aggregate Size | 40 | mm | |
| Water Pump Pressure | 20 | bar | |
| Water Tank Capacity | 500 | liter | |

Outrigger Diagram



Unfolding Height



STEELUS

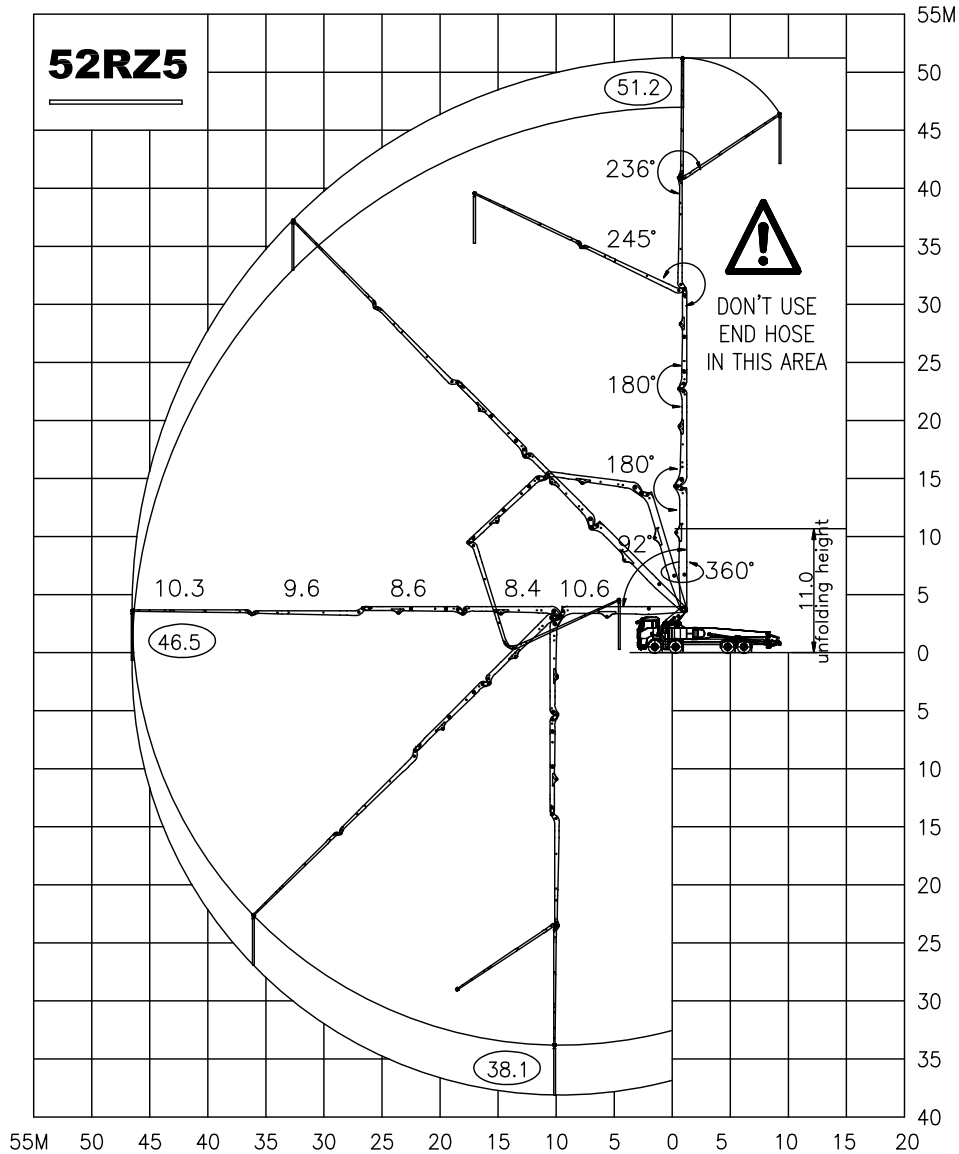
EQUIPMENT

SPT52RZ5

TECHNICAL DATA

TRUCK-MOUNTED
CONCRETE PUMP

WORKING DIAGRAM



Supply Scope (STANDART)

- Twin Wall pipes & Elbows
- Hydraulic changing System
- Hard chromed Concrete Cylinder
- Tungsten Carbide Wear ring & Plate
- Aluminum Platform
- Aluminum Hopper Cover
- Auto Grease System for Hopper
- Water tank (600L)
- Water Pump (30bar)
- Auxiliary Fuel Tank on side Rear Outrigger
- Water Hose with Nozzle (15m)
- Working Light on Hopper & Column
- Convenient Electrical System
- Easy cleaning Hopper (600L)

OPTIONS

- OSS System (One Side Safety System)
- Safety device for Hopper
- Auto grease System for Boom & Turning Base
- Customized Color
- Electric Vibrator
- Working Light on Boom

