

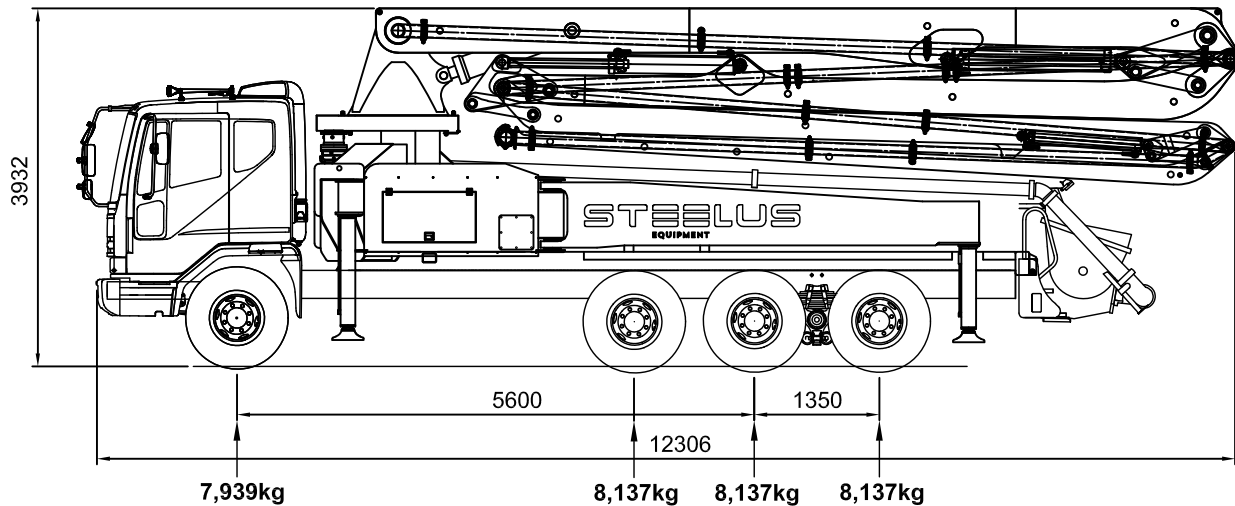
# STEELUS

EQUIPMENT

**SPT43Z5**

## TECHNICAL DATA

### TRUCK-MOUNTED CONCRETE PUMP



**TOTAL WEIGHT : 32,350kg**

## TECHNICAL SPECIFICATIONS

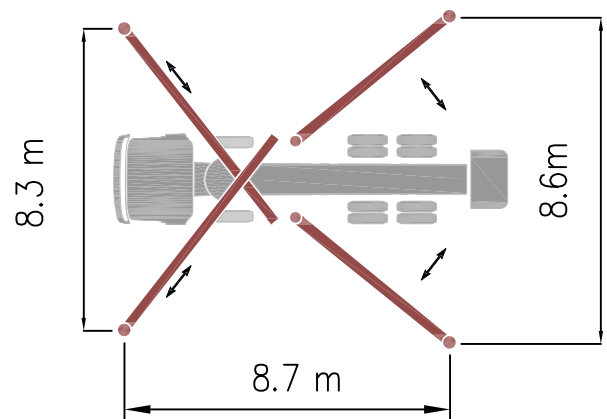
### BOOM SPECIFICATIONS

Number of Booms	5	un
Folding Type	Z	type
Vertical Reach	41.5	m
Horizontal Reach	37.4	m
Reach Depth	28.3	m
Unfolding Height	8.1	m
Delivery Line	125	mm
End Hose Length	3.5	m
Outrigger Spread - Front	8.3	m
Outrigger Spread - Rear	8.6	m

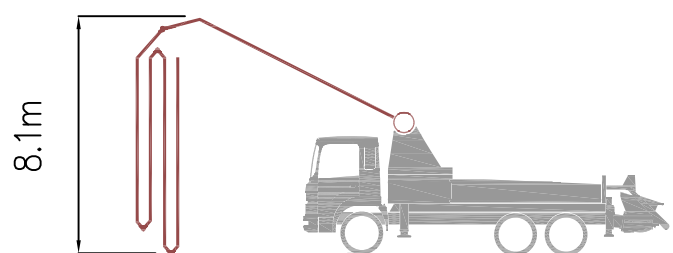
### PUMP SPECIFICATIONS

Maximum Output	Low-pressure	160	m³/h
	High-pressure	100	m³/h
Concrete Pressure	Low-pressure	70	bar
	High-pressure	112	bar
Stroke Per Min.		30	str
Delivery Cylinder		230	Ø
Stroke Length		2100	mm
S-Valve		Ø200 x Ø180	mm
Hydraulic System Pressure		350	bar
Hydraulic System		Open	type
Hydraulic Max. Pressure		320	bar
Hydraulic Pump		Rexroth	
Hopper Capacity		600	liter
Oil Tank Capacity		500	liter
Max. Aggregate Size		40	mm
Water Pump Pressure		20	bar
Water Tank Capacity		500	liter

## Outrigger Diagram



## Unfolding Height



# STEELUS

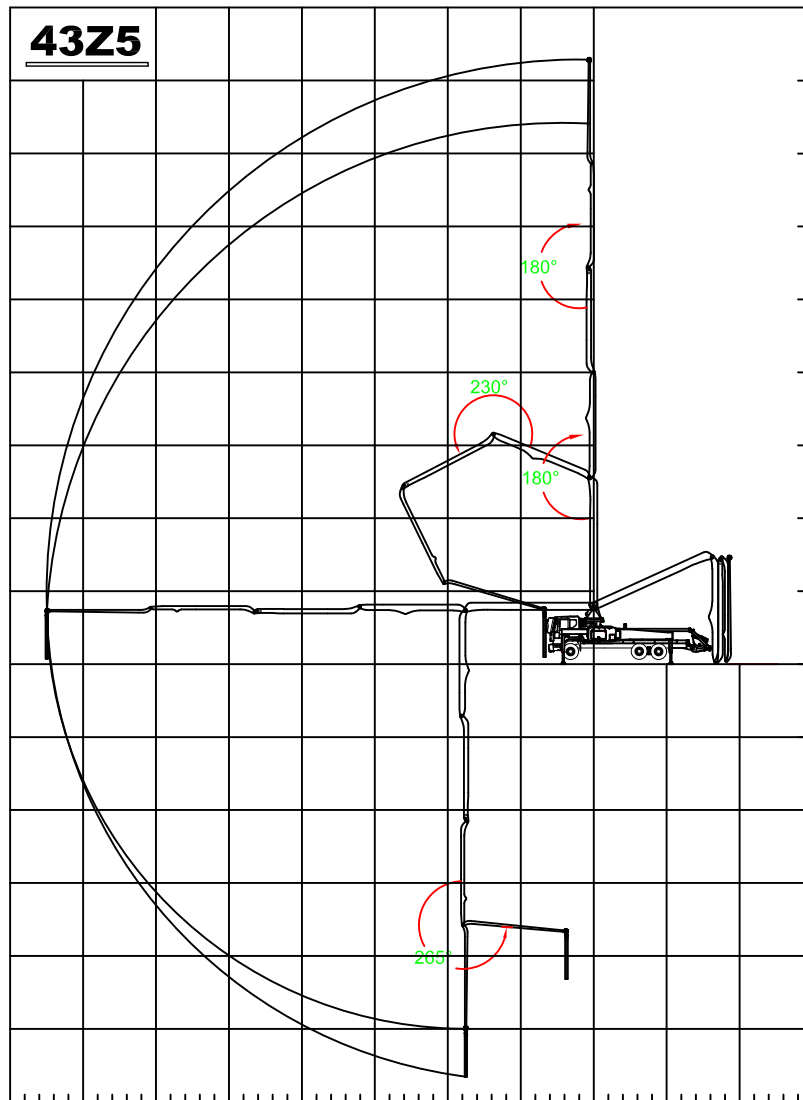
EQUIPMENT

## TECHNICAL DATA

## SPT43Z5

TRUCK-MOUNTED  
CONCRETE PUMP

### WORKING DIAGRAM



### Supply Scope (STANDART)

- Twin Wall pipes & Elbows
- Hydraulic changing System
- Hard chromed Concrete Cylinder
- Tungsten Carbide Wear ring & Plate
- Aluminum Platform
- Aluminum Hopper Cover
- Auto Grease System for Hopper
- Water tank (600L)
- Water Pump (30bar)
- Auxiliary Fuel Tank on side Rear Outrigger
- Water Hose with Nozzle (15m)
- Working Light on Hopper & Column
- Convenient Electrical System
- Easy cleaning Hopper (600L)

### OPTIONS

- OSS System (One Side Safety System)
- Safety device for Hopper
- Auto grease System for Boom & Turning Base
- Customized Color
- Electric Vibrator
- Working Light on Boom

